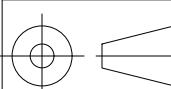




REVISIONS				
SYM.	ZONE	DESCRIPTION	DATE	APP.
A		RELEASED FOR FABRICATION TO J&J BURNING	8/1/13	TIO

39 STRING ASSEMBLY FIXTURE
FILE NAME: 7103-171
SHEET NO.: 6
DFT. SCALE: 1/12
MATERIAL:
QTY:
NOTES:

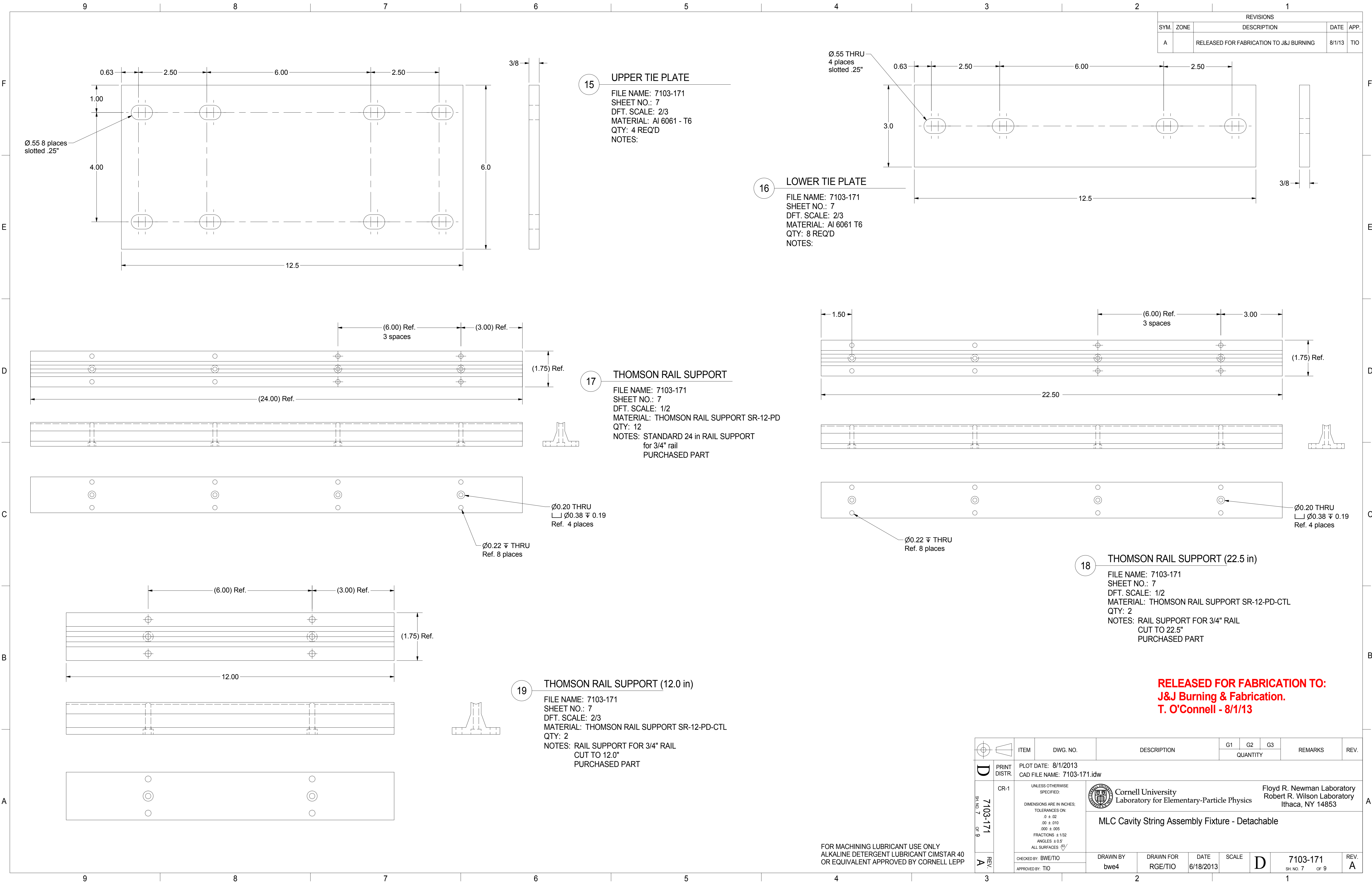
RELEASED FOR FABRICATION TO:
J&J Burning & Fabrication.
T. O'Connell - 8/1/13

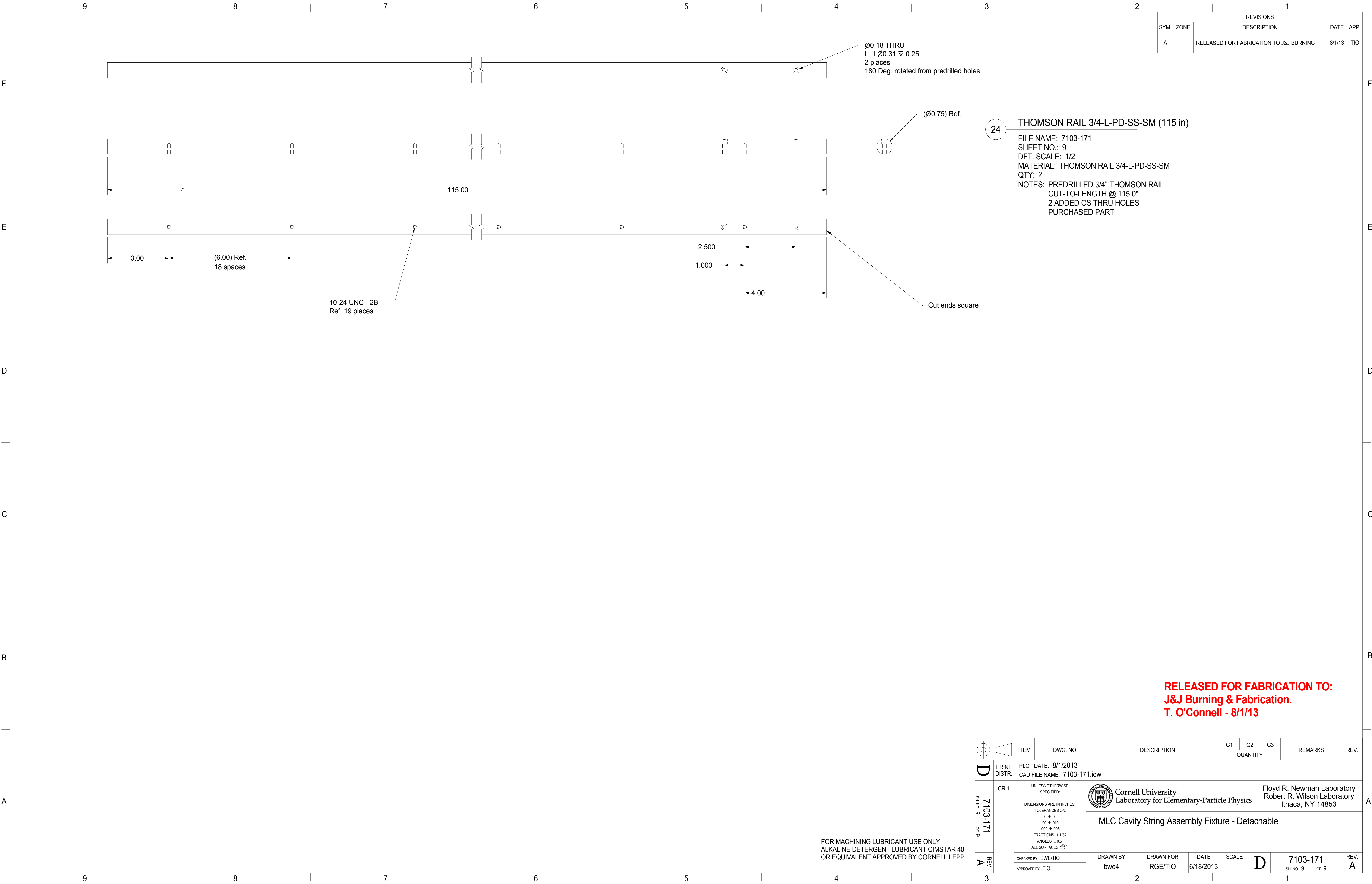
39	PURCHASED	1-8 Hex Nut	8		St. Stl.	
38	PURCHASED	1/2-13 x 1 Socket Head Cap Screw	8		St. Stl.	
37	PURCHASED	1/2-13 x 2 Socket Head Cap Screw	16		St. Stl.	
36	PURCHASED	1/2-13 Hex Nut	48		St. Stl.	
35	PURCHASED	1/2 Washer	32		St. Stl.	
34	PURCHASED	1/2 Split Lock Washer	56		St. Stl.	
33	PURCHASED	1/2 - 13 x 1.5 Socket Head Cap Screw	32		St. Stl.	
32	PURCHASED	#10 Split Lock Washer	144		St. Stl.	
31	PURCHASED	#10-32 x .5 Socket Head Cap Screw	144		St. Stl.	
30	PURCHASED	3/8 Split Lock Washer	32		St. Stl.	
29	PURCHASED	3/8 Washer	32		St. Stl.	
28	PURCHASED	3/8-24 x 3/4 Socket Head Cap Screw	32		St. Stl.	
27	PURCHASED	Albion Caster #16TM05101S	8			
26	7102-071 (pt. 47)	CART FOOT ASMY	8			
25	7102-071 (pt. 46)	CASTER LEVEL BEAM	4			
24	SHEET 9 (PURCHASED)	THOMSON RAIL 3/4-L-PD-SS-SM (112 in)	2			
23	SHEET 8 (PURCHASED)	THOMSON RAIL 3/4-L-PD-SS-SM (38.5 in)	2			
22	SHEET 8 (PURCHASED)	THOMSON RAIL 3/4-L-PD-SS-CTL (172 in)	2			
21	SHEET 8 (PURCHASED)	THOMSON RAIL SUPPORT SM (13 in)	2			
20	SHEET 8 (PURCHASED)	THOMSON RAIL SUPPORT SM (24 in)	2			
19	SHEET 7 (PURCHASED)	THOMSON RAIL SUPPORT (12 in)	2			
18	SHEET 7 (PURCHASED)	THOMSON RAIL SUPPORT (22.5 in)	2			
17	SHEET 7 (PURCHASED)	THOMSON RAIL SUPPORT (24 in)	12			
16	SHEET 7	LOWER TIE PLATE	8			
15	SHEET 7	UPPER TIE PLATE	4			

		ITEM		DWG. NO.		DESCRIPTION			G1	G2	G3	REMARKS		REV.	
									QUANTITY						
D	PRINT DISTR.	PLOT DATE: 8/1/2013 CAD FILE NAME: 7103-171.idw													
	CR-1	UNLESS OTHERWISE SPECIFIED: DIMENSIONS ARE IN INCHES; TOLERANCES ON: .0 ± .02 .00 ± .010 .000 ± .005 FRACTIONS ± 1/32 ANGLES ± 0.5° ALL SURFACES 			<div> Cornell University Laboratory for Elementary-Particle Physics</div> <div>Floyd R. Newman Laboratory Robert R. Wilson Laboratory Ithaca, NY 14853</div>										
7103-171 SH. NO. 6 OF 9		MLC Cavity String Assembly Fixture - Detachable Top Level Assembly													
A	REV.	CHECKED BY: BWE/TIO			DRAWN BY bwe4		DRAWN FOR RGE/TIO		DATE 6/18/2013		SCALE D		7103-171 SH. NO. 6 OF 9		REV. A
		APPROVED BY: TIO													

Cornell University
Laboratory for Elementary-Particle Physics
Floyd R. Newman Laboratory
Robert R. Wilson Laboratory
Ithaca, NY 14853


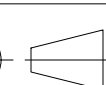




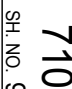
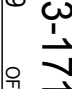

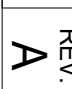
MLC Cavity String Assembly Fixture - Detachable
Top Level Assembly





REVISIONS				
SYM.	ZONE	DESCRIPTION	DATE	APP.
A		RELEASED FOR FABRICATION TO J&J BURNING	8/1/13	TIO

24 THOMSON RAIL 3/4-L-PD-SS-SM (115 in)
FILE NAME: 7103-171
SHEET NO.: 9
DFT. SCALE: 1/2
MATERIAL: THOMSON RAIL 3/4-L-PD-SS-SM
QTY: 2
NOTES: PREDRILLED 3/4" THOMSON RAIL
CUT-TO-LENGTH @ 115.0"
2 ADDED CS THRU HOLES
PURCHASED PART

				ITEM		DWG. NO.		DESCRIPTION				G1		G2		G3		REMARKS		REV.	
												QUANTITY									
		PRINT DISTR.		PLOT DATE: 8/1/2013 CAD FILE NAME: 7103-171.idw																	
		CR-1		<div>UNLESS OTHERWISE SPECIFIED:</div> <div>DIMENSIONS ARE IN INCHES:</div> <div>TOLERANCES ON:</div> <div>Ø ± .02</div> <div>.00 ± .010</div> <div>.000 ± .005</div> <div>FRACTIONS ± 1/32</div> <div>ANGLES ± 0.5°</div> <div>ALL SURFACES </div> <div> Cornell University Laboratory for Elementary-Particle Physics</div> <div>Floyd R. Newman Laboratory Robert R. Wilson Laboratory Ithaca, NY 14853</div>																	
		REV. A		CHECKED BY: BWE/TIO																	
				DRAWN BY bwe4																	
		REV. A		APPROVED BY: TIO																	
				DRAWN FOR RGE/TIO																	
		REV. A		DATE 6/18/2013																	
				SCALE D																	
		REV. A		7103-171																	
				SH. NO. 9 OF 9																	